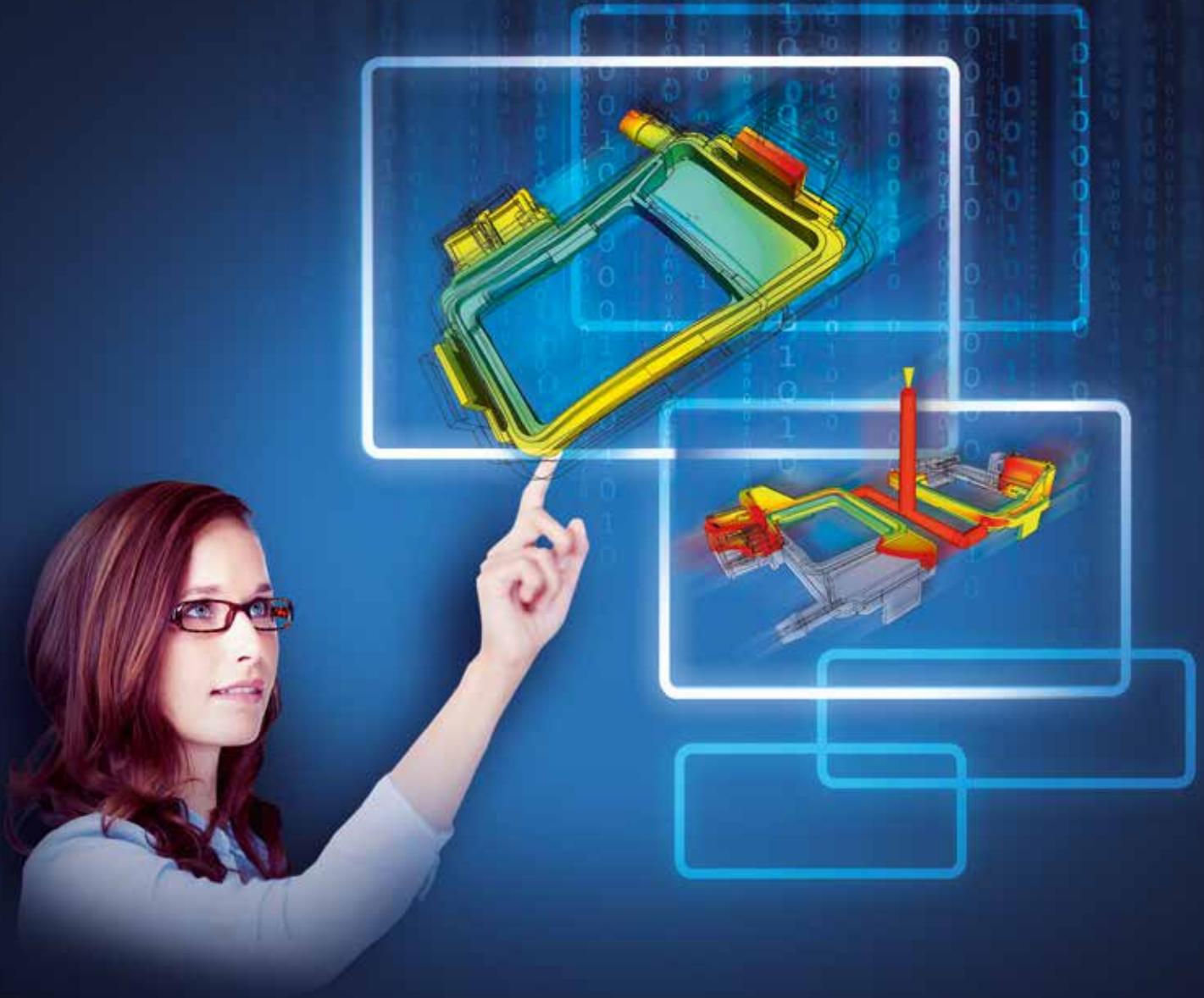


CADMOULD®

3D-F SIMULATION



WARP EXPERT

**SOFTWARE BUNDLE FOR PRECISE
SIMULATION OF SHRINKAGE AND WARPAGE**

THE EXPERT SOFTWARE
FOR THE ENGINEERING OF PART, MOULD AND PROCESS

CADMOULD® GUARANTEE
3D-F Precision

- ✓ EXACT RESULTS
- ✓ AUTOMATIC MESHING
- ✓ FAST CALCULATION

■ SOFTWARE-BUNDLE FOR THE PRECISE SIMULATION OF SHRINKAGE AND WARPAGE

YOUR EXPERT SOFTWARE FOR THE ENGINEERING OF PART, MOULD, AND PROCESS

The Warp Expert software package contains the essential Cadmould® 3D-F products of the expert product line for a precise engineering of parts, moulds and processes in injection moulding.

Warp Expert unites more than 20 years of experience of predicting shrinkage and warpage with the reliable performance spectrum of the Cadmould® 3D-F product family that has been developed for over 25 years by Simcon in Germany.

Cadmould® 3D-F uses the highly precise 3D-F method especially designed by Simcon for the injection moulding simulation, making Cadmould® 3D-F the superior simulation solution.

THE WARP EXPERT PERFORMANCE FEATURES

- Calculates precisely shrinkage and warpage
- Measures the part exactly by integrated measurement functions
- Illustrates the results by animation and 3D cuts
- Determines information about warpage compensation for reverse engineering processes
- Demonstrates position and depth of sink marks
- Calculates the shrinkage compensation (lengthwise and across)
- Optimises family and multi cavity moulds
- Balances automatically runner systems
- Varies process parameters using DOE
- Establishes the precise demoulding time and shot weight
- Simulates filling, packing and cooling phase (filling, pressures, temperatures, fibre orientations, clamping force, shrinkage and warpage, ...)
- Generates automatically individual reports

THE BENEFITS OF WARP EXPERT

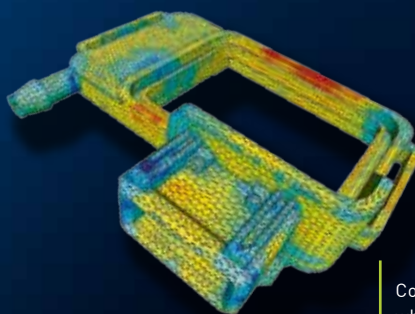
- Reduction of mould corrections
- Solving of warping problems
- Fast comparison of variants
- Check of the feasibility of dimensions
- Optimisation of the injection moulding process

THE WARP EXPERT ADVANTAGES

- Supports front-loading by recognising and avoiding problems early
- Recognises critical mould areas to reduce amendment costs

The Warp Expert Advantages for operative working:

- Simple integration into design and construction: Import of STL and IGES by integrated CAD kernel (further formats available as an option)
- Integrated CAD-independent adaptation of the wall thicknesses of moulded parts
- Automatic generation of reports: HTML, MSWord®, MSPowerPoint®



Considers the fibre orientation when calculating shrinkage and warpage

AREAS OF APPLICATION:

- Exact engineering of moulded part and mould
- Optimisation of the injection moulding process

TYPE OF PRODUCT:

- Stand alone software bundle of the Cadmould® 3D-F Expert product line, suitable for Windows® operating systems
- Can be extended any time to further Cadmould® 3D-F modules